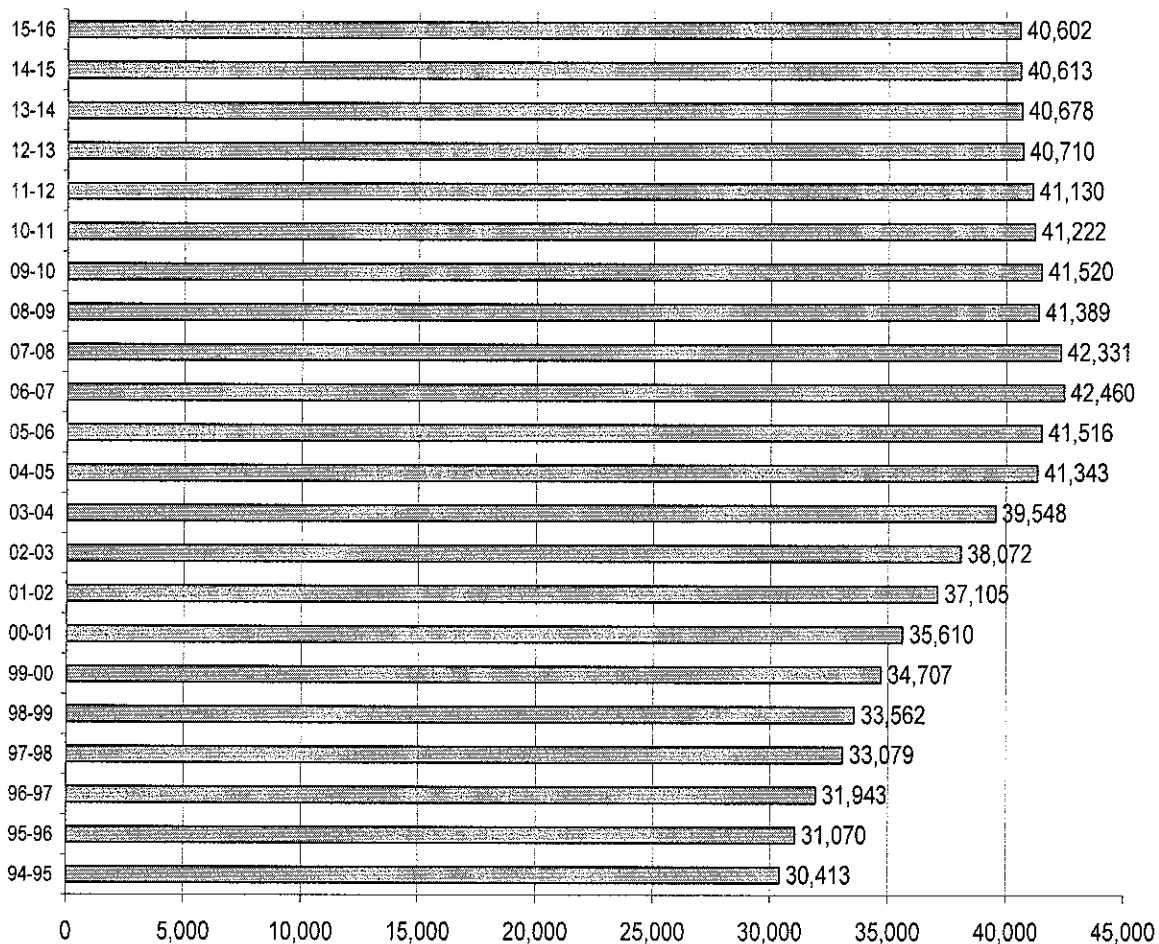


# The School Board of Sarasota County, Florida

## Preliminary Student Enrollment Forecast

### Executive Summary

The attached preliminary student enrollment forecast has been based upon the first twenty day count on September 20, 2010. This forecast will be updated for the actual October student FTE reported to the state and the actual enrollment for October. The forecast for the five year period of 2011-2012 through 2015-2016 has no student growth forecasted. The reasons for this is that Sarasota County as of July had an 11.8% unemployment rate along with a high real estate foreclosure market. The preliminary figures indicate the student decline from last year will be 298 students and over the five years a student decline of 620 students. These projections will be reviewed with the Principals and the appropriate Executive Directors for changes before submitting the state student FTE projection for 2011-2012. The graph below displays our student enrollment for the period 1994-1995 through the projection of 2015-2016.



# The School Board of Sarasota County, Florida

## Student Enrollment Forecast District Summary of all Schools

School	2007-2008	2008-2009	2009-2010	2010-2011	2011-2012	2012-2013	2013-2014	2014-2015	2015-2016
<b>Elementary Schools</b>									
Alta Vista	682	689	640	633	646	618	613	607	608
Ashton	838	811	837	814	809	807	813	809	777
Bay Haven	588	589	583	583	583	583	583	583	583
Brentwood	733	709	674	649	618	619	610	607	605
Cranberry	879	805	810	747	736	739	739	749	743
Emma Booker	560	523	490	514	492	487	503	524	537
Englewood	420	405	402	384	388	412	434	447	472
Fruitville	680	693	719	714	706	710	713	715	704
Garden	628	617	609	598	601	583	595	609	612
Glenallen	868	774	714	677	670	682	724	734	745
Gocio	812	736	755	740	719	703	672	667	675
Gulf Gate	792	804	735	746	741	758	766	752	788
Lakeview	750	772	697	635	625	620	616	631	649
Lamarque	1,131	1,055	1,044	1,011	999	949	948	965	950
Atwater Elementary			686	680	673	651	642	640	634
Tatum Ridge	833	849	805	750	712	695	681	653	642
Phillippi	628	659	665	645	636	631	612	603	602
Southside	646	640	705	736	719	698	693	677	646
Taylor Ranch	846	840	803	707	669	634	625	594	573
Toledo	1,564	1,320	677	636	624	619	626	626	622
Tuttle	727	697	629	635	630	627	630	635	645
Venice	652	682	609	599	610	615	644	653	668
Wilkinson	638	572	553	525	524	532	521	529	536
<b>Total Elementary Schools</b>	<b>16,895</b>	<b>16,241</b>	<b>15,841</b>	<b>15,358</b>	<b>15,130</b>	<b>14,972</b>	<b>15,007</b>	<b>15,007</b>	<b>14,997</b>
<b>Middle Schools</b>									
Booker Middle	893	890	887	856	820	811	791	782	775
Brookside Middle	1,075	1,135	1,077	1,051	983	942	929	910	895
Heron Creek Middle	2,071	1,278	1,176	1,117	1,115	1,133	1,129	1,125	1,146
McIntosh Middle	1,063	978	891	869	859	850	842	825	817
Woodland Middle		719	767	678	658	686	716	732	750
Sarasota Middle	1,169	1,148	1,142	1,139	1,132	1,136	1,156	1,184	1,216
Venice Middle	870	791	755	727	712	696	679	668	662
<b>Total Middle Schools</b>	<b>7,141</b>	<b>6,939</b>	<b>6,695</b>	<b>6,437</b>	<b>6,280</b>	<b>6,253</b>	<b>6,243</b>	<b>6,225</b>	<b>6,261</b>
<b>High Schools</b>									
Booker High	1,536	1,255	1,142	1,075	1,014	980	970	956	941
NorthPort	2,709	2,540	2,586	2,492	2,439	2,430	2,400	2,330	2,271
Riverview	2,454	2,532	2,670	2,769	2,802	2,783	2,799	2,776	2,747
Sarasota High	2,533	2,373	2,235	2,018	1,928	1,788	1,719	1,745	1,770
Suncoast Polytechnical High		150	308	436	574	564	557	565	572
Venice High	2,112	2,019	1,960	1,969	1,960	1,869	1,831	1,847	1,863
<b>Total High Schools</b>	<b>11,489</b>	<b>10,869</b>	<b>10,901</b>	<b>10,759</b>	<b>10,718</b>	<b>10,414</b>	<b>10,276</b>	<b>10,220</b>	<b>10,166</b>
<b>Other Schools</b>									
Laurel Nokomis School	1,153	1,067	1,080	1,099	1,100	1,096	1,114	1,110	1,101
District Virtual School			41	148	166	179	194	211	230
Phoenix Academy	172	191	193	203	180	180	180	180	180
Oak Park	365	365	383	354	374	356	372	374	378
Oak Park South	49	47	45	38	46	57	58	58	58
ESE Vouchers to Private Schools	298	300	254	270	273	261	270	263	268
Sarasota Technical Institute	622	661	673	620	640	641	642	643	634
Pineview	2,210	2,116	2,170	2,227	2,230	2,250	2,250	2,250	2,250
ESE Special Programs	86	91	87	73	84	84	84	84	84
<b>Total Other Schools</b>	<b>4,333</b>	<b>4,177</b>	<b>4,253</b>	<b>4,412</b>	<b>4,452</b>	<b>4,463</b>	<b>4,522</b>	<b>4,530</b>	<b>4,548</b>
<b>Alternative Schools</b>									
Gulf Coast Marine Inst. D.J.J.	33	52	50	47	56	56	56	56	56
Sarasota Foundation / Infinity	17	35	23						
T.R.I.A.D.	76	44	62	82	130	130	130	130	130
Character House D.J.J.	24	23							
<b>Total Second Chance</b>	<b>150</b>	<b>154</b>	<b>135</b>	<b>129</b>	<b>186</b>	<b>186</b>	<b>186</b>	<b>186</b>	<b>186</b>
<b>Charter Schools</b>									
Imagine Charter School at NorthPort		514	637	756	766	800	800	802	802
Imagine Charter School at Palmer Ranch			293	410	478	478	478	478	478
Island Village Montessori	315	289	325	457	495	519	540	540	540
Island Village Middle Montessori	77	74	92						
Island Village North Montessori	30	22	32						
Sarasota Arts & Sciences	604	632	672	677	750	750	750	750	750
The Leadership Academy of Venice	246	274	287	299	300	300	300	300	300
Sarasota Military	524	614	713	800	800	800	800	800	800
Suncoast Innovative Studies	236	264	290	300	336	336	336	336	336
Sarasota Suncoast Academy	266	326	354	428	438	438	438	438	438
<b>Total Charter Schools</b>	<b>2,323</b>	<b>3,009</b>	<b>3,695</b>	<b>4,127</b>	<b>4,364</b>	<b>4,421</b>	<b>4,442</b>	<b>4,445</b>	<b>4,444</b>
<b>Grand Total Pre K through Grade Twelve</b>	<b>42,331</b>	<b>41,389</b>	<b>41,520</b>	<b>41,222</b>	<b>41,130</b>	<b>40,710</b>	<b>40,676</b>	<b>40,613</b>	<b>40,602</b>

**The School Board of Sarasota County, Florida  
District Summary of all Schools by Grade Level  
Student Enrollment Forecast through 2014-2015**

Historical Student by enrollment by Grade level information (Based upon October of each school year)

Student Enrollment by Grade Level									
Grade Level	2007-2008	2008-2009	2009-2010	2010-2011	2011-2012	2012-2013	2013-2014	2014-2015	2015-2016
PreKindergarten	366	397	393	405	385	391	398	405	412
Kindergarten	2,943	3,012	3,020	2,867	2,781	2,803	2,826	2,839	2,867
First	3,087	2,947	3,085	3,043	2,903	2,851	2,900	2,942	2,957
Second	3,183	3,076	2,982	3,120	3,121	2,980	2,954	3,016	3,053
Third	3,337	3,207	3,174	3,036	3,205	3,229	3,101	3,065	3,144
Fourth	3,143	3,185	3,138	3,131	3,017	3,175	3,215	3,094	3,055
Fifth	3,240	3,182	3,204	3,140	3,189	3,065	3,214	3,241	3,111
Sixth	3,241	3,213	3,215	3,236	3,200	3,169	3,132	3,164	3,190
Seventh	3,378	3,186	3,247	3,180	3,248	3,280	3,261	3,238	3,274
Eighth	3,113	3,292	3,214	3,227	3,213	3,190	3,246	3,235	3,215
Ninth	3,845	3,536	3,644	3,527	3,588	3,503	3,497	3,461	3,480
Tenth	3,503	3,424	3,290	3,391	3,300	3,354	3,267	3,252	3,229
Eleventh	3,045	3,002	3,127	3,103	2,936	2,854	2,882	2,824	2,826
Twelfth	2,907	2,730	2,787	2,816	3,043	2,866	2,782	2,838	2,789
<b>Total by Grade</b>	<b>42,331</b>	<b>41,389</b>	<b>41,520</b>	<b>41,222</b>	<b>41,130</b>	<b>40,710</b>	<b>40,676</b>	<b>40,613</b>	<b>40,602</b>
Students by Program funded through the Florida Education Finance Program									
Basic Education	28,246	27,685	28,018	27,647	27,080	26,798	26,762	26,703	26,668
E.S.O.L.	1,799	1,758	1,752	1,813	1,792	1,772	1,766	1,765	1,769
Students with Disabilities k-3	2,496	2,315	2,323	2,270	2,259	2,249	2,258	2,258	2,258
Students with Disabilities 4-8	4,939	4,863	4,775	4,795	4,781	4,778	4,789	4,783	4,792
Students with Disabilities 9-12	2,587	2,618	2,670	2,598	2,561	2,512	2,493	2,486	2,483
ESE Level 4	435	426	414	390	407	391	406	407	410
ESE Level 5	88	87	80	74	78	75	78	78	79
Vocational	1,316	1,210	1,086	1,091	1,117	1,098	1,090	1,094	1,099
<b>Total Students by Program</b>	<b>41,905</b>	<b>40,963</b>	<b>41,117</b>	<b>40,677</b>	<b>40,075</b>	<b>39,674</b>	<b>39,641</b>	<b>39,574</b>	<b>39,557</b>

